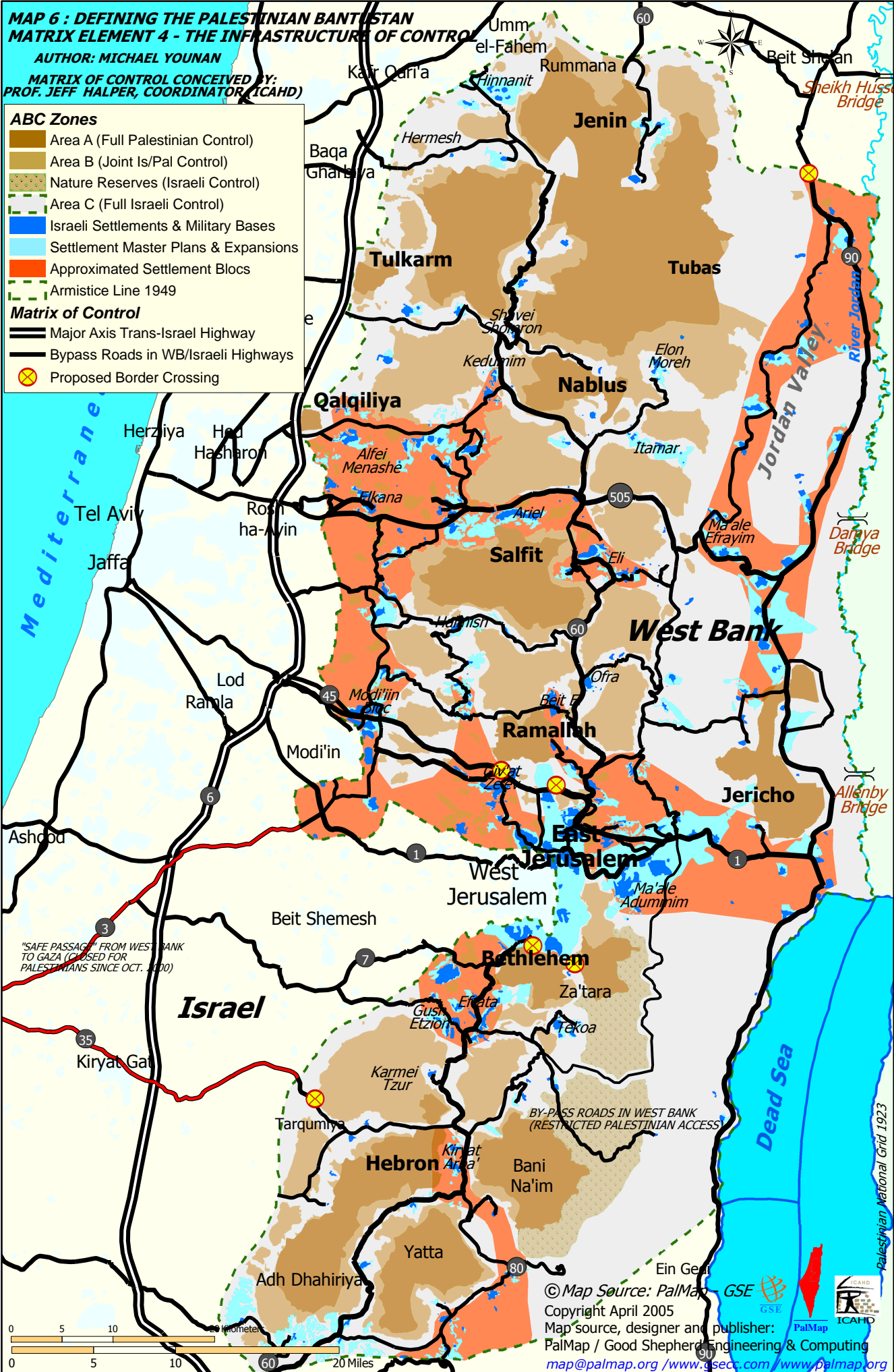


**MAP 6 : DEFINING THE PALESTINIAN BANTUSTAN**  
**MATRIX ELEMENT 4 - THE INFRASTRUCTURE OF CONTROL**  
 AUTHOR: MICHAEL YOUNAN  
 MATRIX OF CONTROL CONCEIVED BY: PROF. JEFF HALPER, COORDINATOR (ICAHN)

- ABC Zones**
- Area A (Full Palestinian Control)
  - Area B (Joint Is/Pal Control)
  - Nature Reserves (Israeli Control)
  - Area C (Full Israeli Control)
  - Israeli Settlements & Military Bases
  - Settlement Master Plans & Expansions
  - Approximated Settlement Blocs
  - Armistice Line 1949
- Matrix of Control**
- Major Axis Trans-Israel Highway
  - Bypass Roads in WB/Israeli Highways
  - Proposed Border Crossing



© Map Source: PalMap, GSE  
 Copyright April 2005  
 Map source, designer and publisher:  
 PalMap / Good Shepherd Engineering & Computing  
[map@palmap.org](mailto:map@palmap.org) / [www.gsecc.com](http://www.gsecc.com) / [www.palmap.org](http://www.palmap.org)